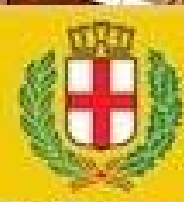




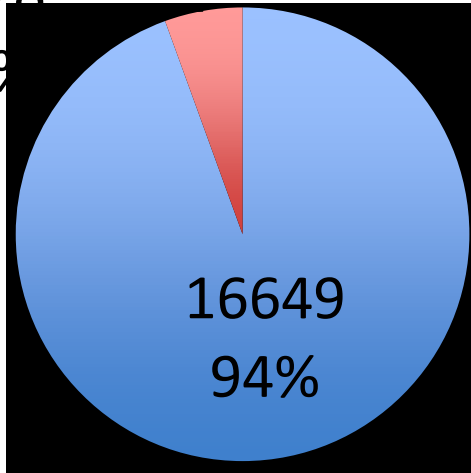
# MILANO PARTECIPA





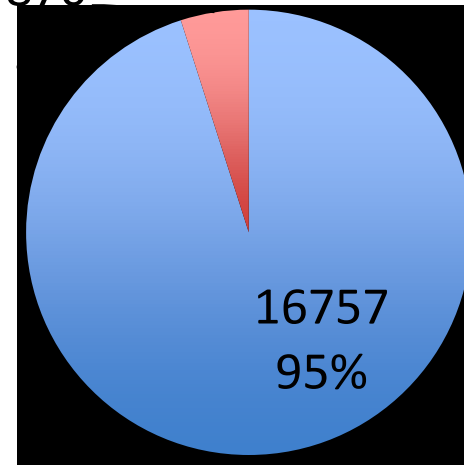
## CITTADINI VOTANTI 17627

978  
6%



■ VOTANTI ONLINE  
■ VOTANTI OFFLINE

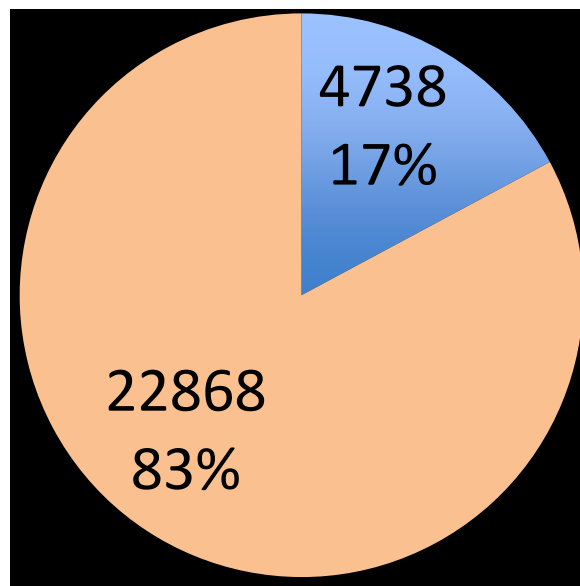
870



■ VOTANTI RESIDENTI  
■ VOTANTI CITY USER



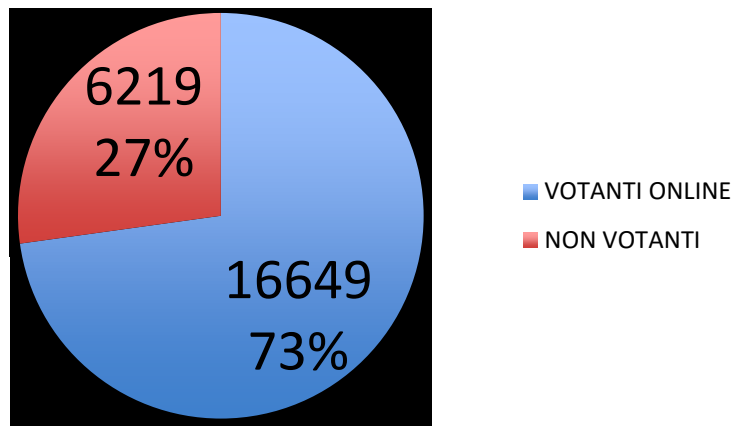
## UTENTI REGISTRATI 27606



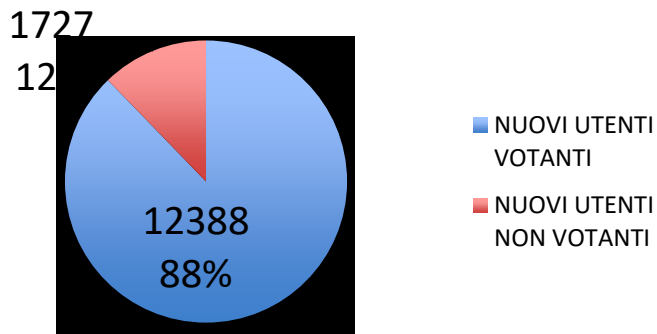
■ BASIC  
■ ADVANCED



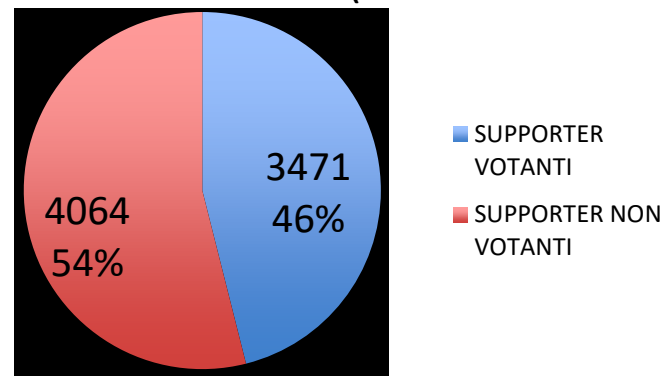
## UTENTI REGISTRATI "ADVANCED" 22868



### NUOVI REGISTRATI: 16517 (DOPO 15/3)



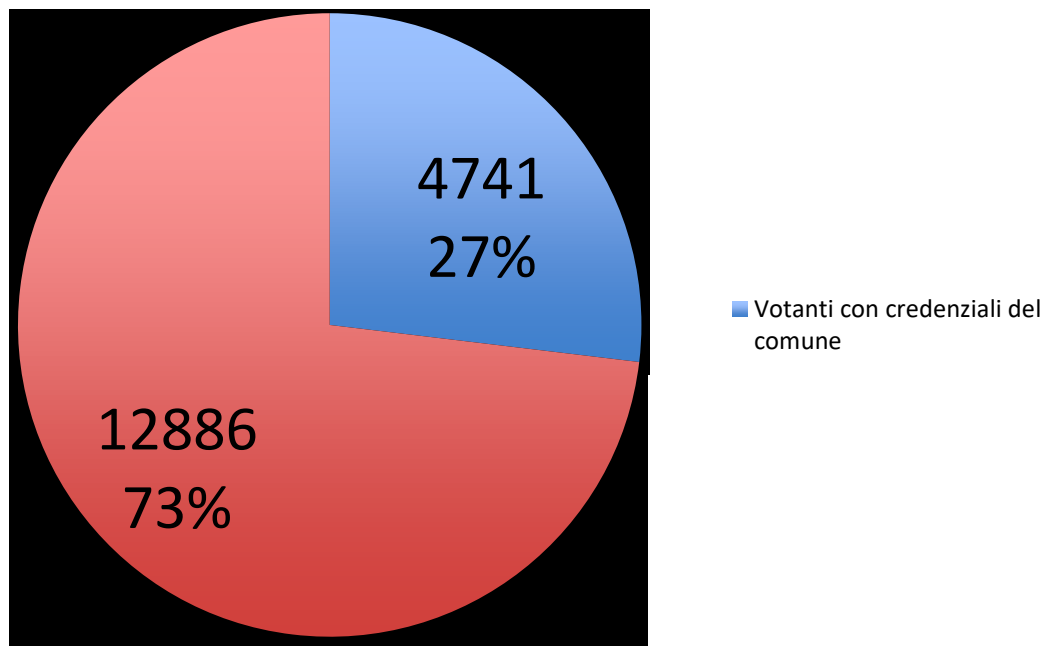
### SUPPORTERS: 7535 (REGISTRATI NELLA I FASE)

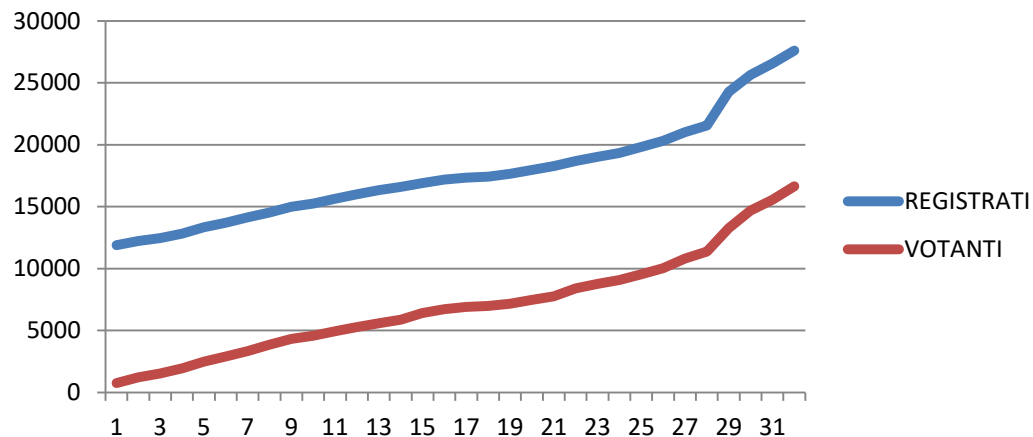




## VOTANTI CON CREDENZIALI DEL COMUNE

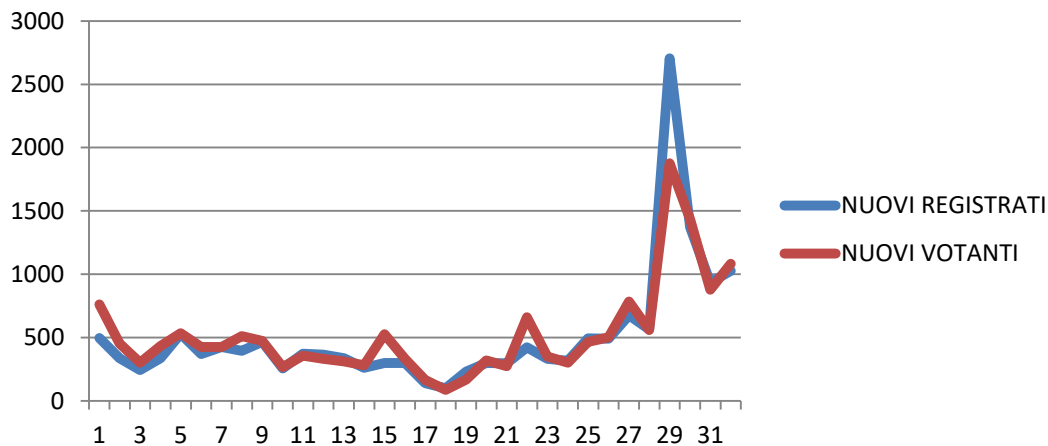
4741





UTENTI REGISTRATI  
27606

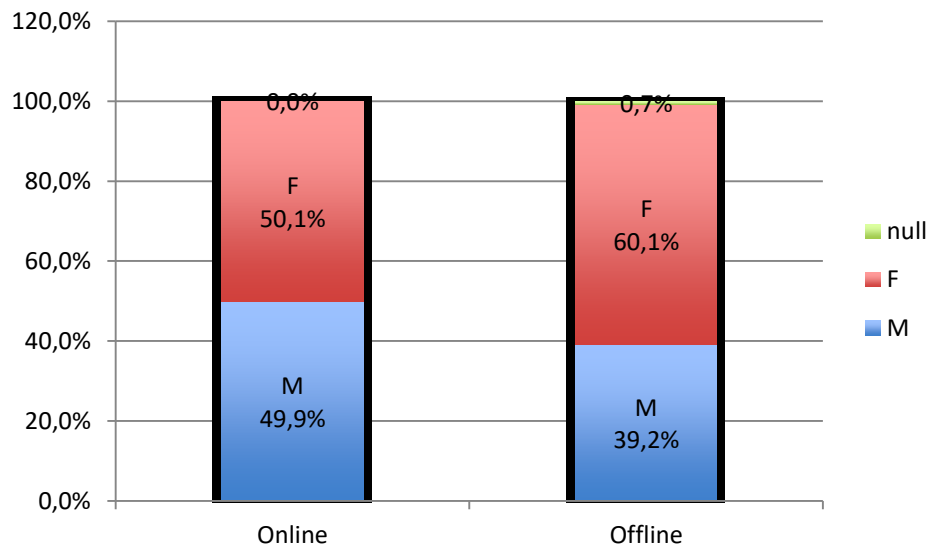
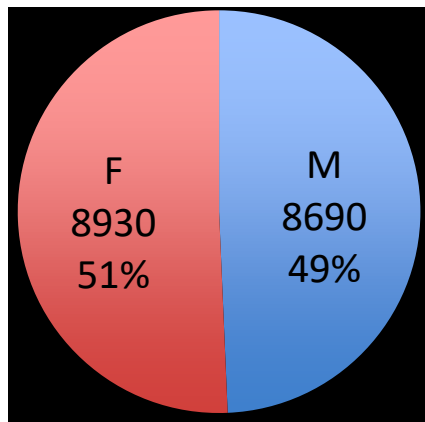
VOTANTI ONLINE  
16649





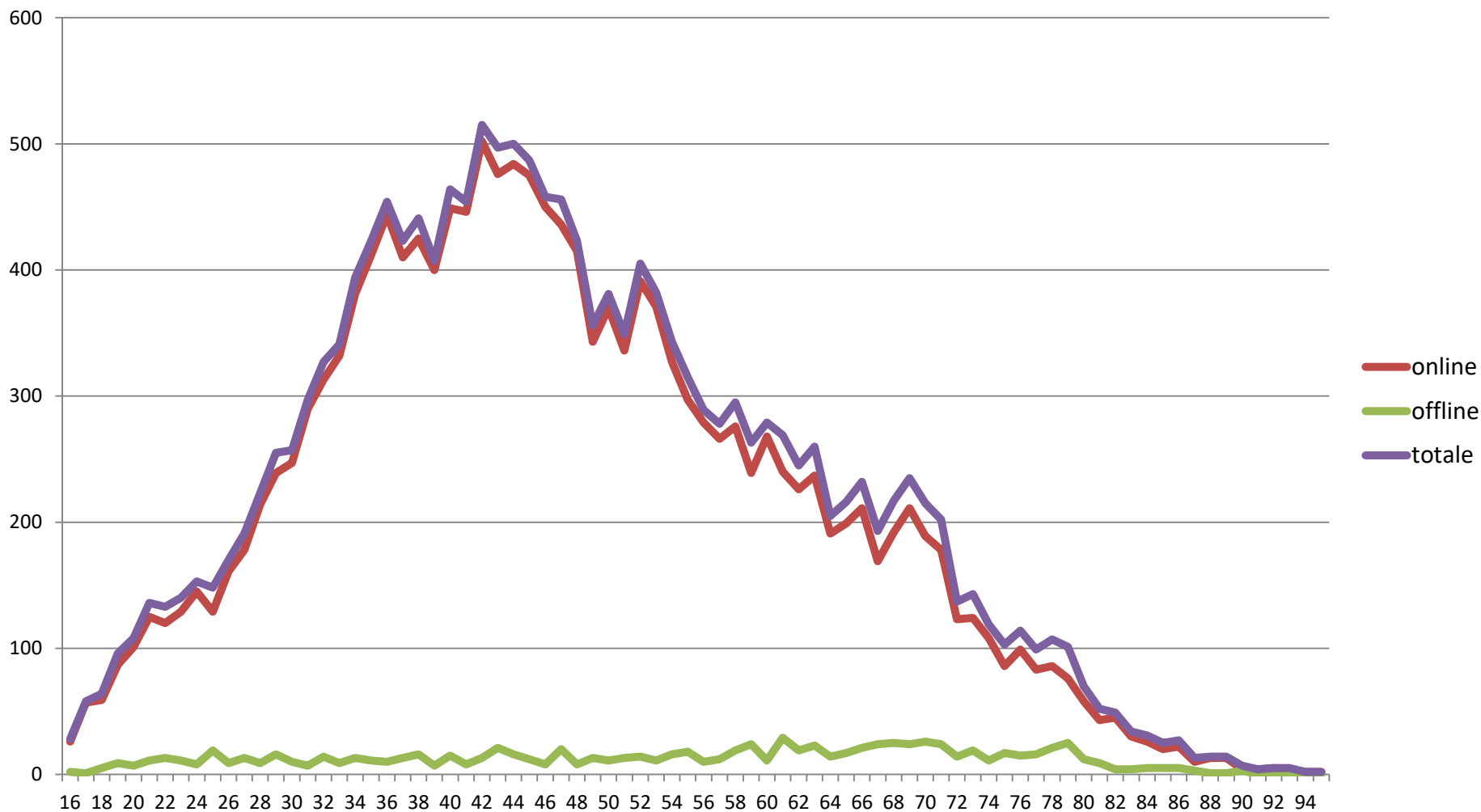
## VOTANTI: GENERE

GENERE						
	ONLINE		OFFLINE		TOTALE	
	V.A.	Online	V.A.	Offline	V.A.	%
<b>M</b>	8307	49,9%	383	39,2%	<b>8690</b>	<b>49,3%</b>
<b>F</b>	8342	50,1%	588	60,1%	<b>8930</b>	<b>50,7%</b>
<b>null</b>	0	0,0%	7	0,7%	<b>7</b>	<b>0,0%</b>
<b>TOTALE</b>	<b>16649</b>	<b>100,0%</b>	<b>978</b>	<b>100,0%</b>	<b>17627</b>	<b>100,0%</b>





## VOTANTI: ETA'

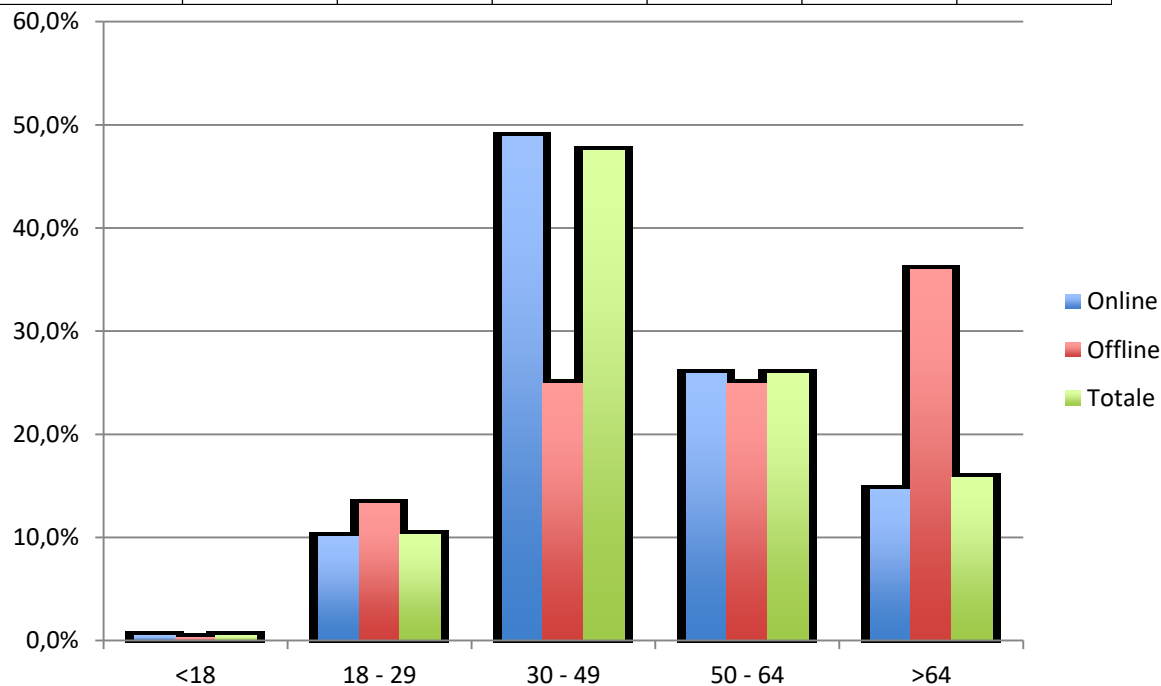




# MILANO PARTECIPA

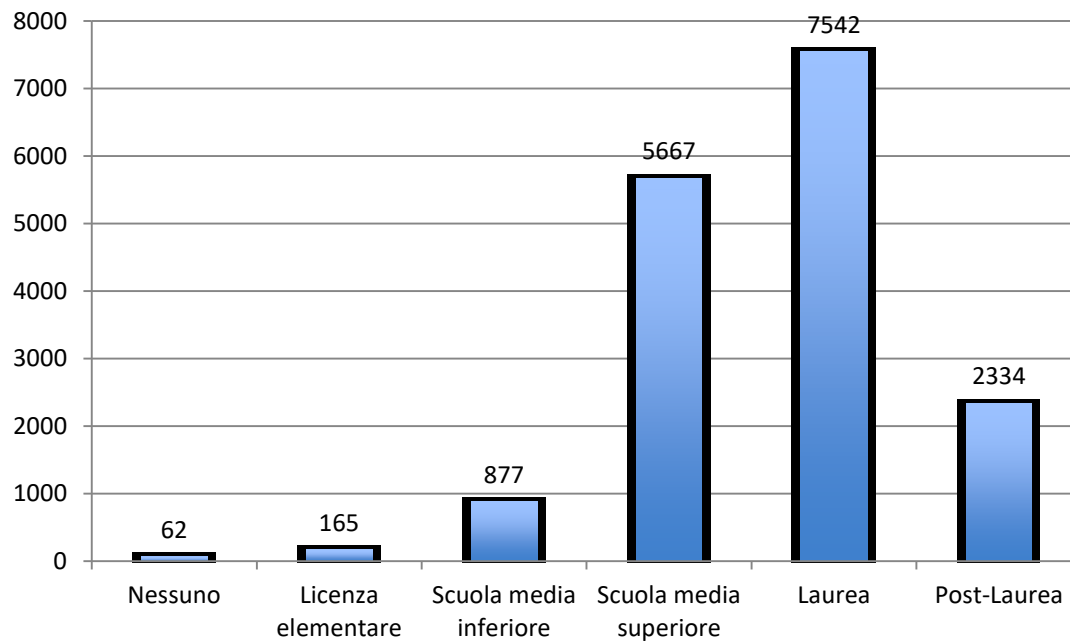


VOTANTI: CLASSI DI ETA'						
	ONLINE		OFFLINE		TOTALE	
	V.A.	Online	V.A.	Offline	V.A.	%
<b>&lt;18</b>	83	0,5%	3	0,3%	<b>86</b>	<b>0,5%</b>
<b>18 - 29</b>	1687	10,1%	130	13,3%	<b>1817</b>	<b>10,3%</b>
<b>30 - 49</b>	8130	48,8%	244	24,9%	<b>8374</b>	<b>47,5%</b>
<b>50 - 64</b>	4314	25,9%	244	24,9%	<b>4558</b>	<b>25,9%</b>
<b>&gt;64</b>	2435	14,6%	352	36,0%	<b>2787</b>	<b>15,8%</b>
<b>NULL</b>	0	0,0%	5	0,5%	<b>5</b>	<b>0,0%</b>
tot	<b>16649</b>	<b>100,0%</b>	<b>978</b>	<b>100,0%</b>	<b>17627</b>	<b>100,0%</b>





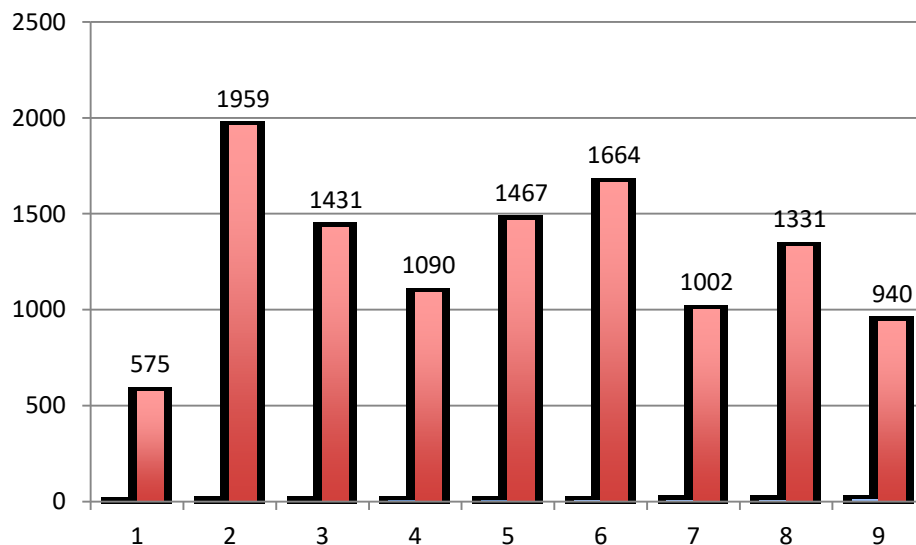
## VOTANTI ONLINE: TITOLO DI STUDIO



TITOLO DI STUDIO	V.A.	%
Nessuno	62	0,37%
Licenza elementare	165	0,99%
Scuola media inferiore	877	5,27%
Scuola media superiore	5667	34,04%
Laurea	7542	45,30%
Post-Laurea	2334	14,02%
(vuote)	2	0,01%
TOTALE	16649	100%



## VOTANTI ONLINE: municipio di residenza



MUNICIPIO	V.A.
1	575
2	1959
3	1431
4	1090
5	1467
6	1664
7	1002
8	1331
9	940
NP*	4320
<b>TOTALE RESIDENTI</b>	<b>15779</b>

\* Alcuni cittadini residenti non hanno associato il valore del Municipio perchè l'integrazione con il login del comune non forniva il municipio di residenza.